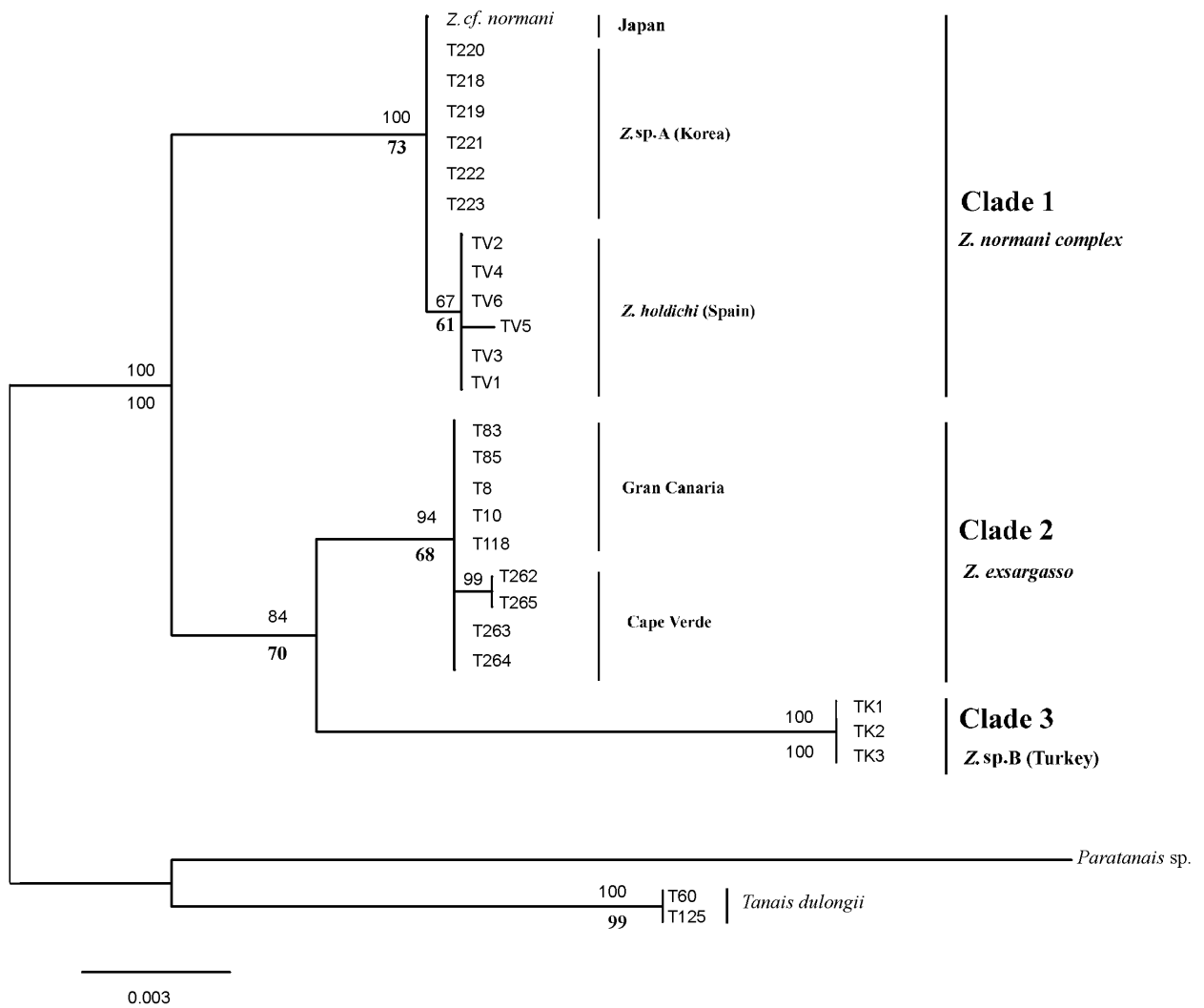


Genetic divergence of tanaidaceans (Crustacea: Peracarida) with low dispersal ability

Kim Larsen ¹, Fernando Tuya ², Elsa Froufe ¹

SUPPLEMENTARY MATERIAL



Maximum Likelihood (ML.) tree for the H3 gene

Fig. S1. – Maximum likelihood (ML) tree for the H3, inferred using the HKY+G model of sequence evolution showing relationships of *Zeuxo* sp. from different locations. The tree is rooted using *Tanais dulongii* and *Paratanais sp.* Bootstrap values above 60% are shown below nodes, and posterior probability values for the Bayesian analysis are above nodes.

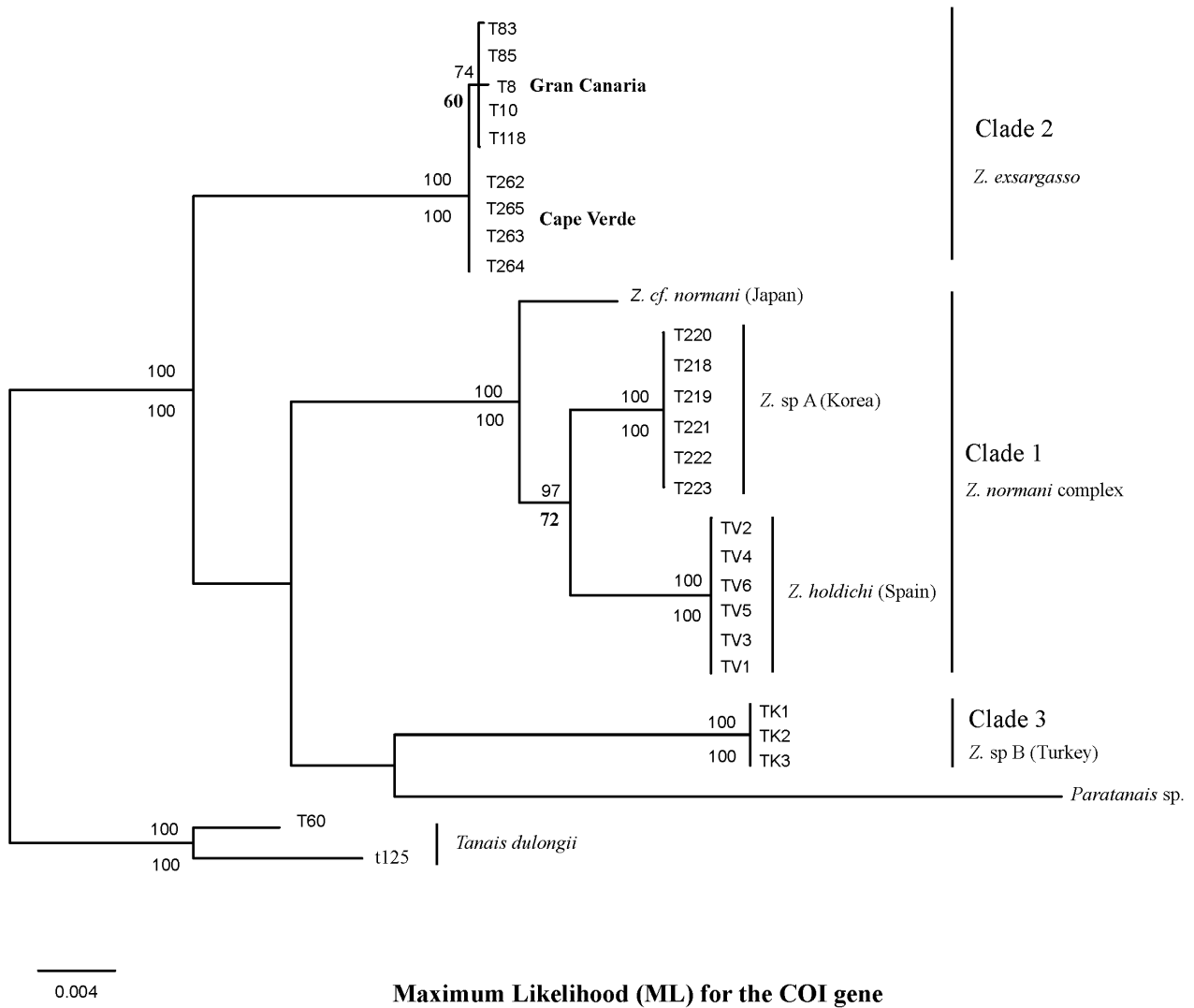


Fig. S2. – Maximum likelihood (ML) tree for the COI, inferred using the HKY+G model of sequence evolution showing relationships of *Zeuxo* sp. from different locations. The tree is rooted using *Tanais dulongii* and *Paratanais* sp. Bootstrap values above 60% are shown below nodes, and posterior probability values for the Bayesian analysis are above nodes.