

**New records of seaweeds and filamentous cyanobacteria
from Trindade Island: an updated checklist to
support conservation guidelines and monitoring of
environmental changes in the southern
Atlantic archipelagos**

Franciane Pellizzari, Vanessa Sayuri Osaki, Michelle C. Santos-Silva

Supplementary material

Table S1. – List of seaweed species already reported from Trindade Island, southwestern Atlantic, complementary to the new occurrences recorded in the present study.

CHLOROPHYTA	<i>Feldmannia mitchelliae</i> (Harvey) H.-S.Kim
<i>Acetabularia</i> sp.	<i>Lobophora variegata</i> (J.V.Lamouroux) Womersley ex E.C.Oliveira
<i>Anadyomene saldanhae</i> A.B.Joly & E.C.Oliveira	<i>Neoralfsia expansa</i> (J.Agardh) P.-E.Lim & H.Kawai ex Cormaci & G.Furnari
<i>Anadyomene stellata</i> (Wulfen) C.Agardh	<i>Padina gymnospora</i> (Kützinger) Sonder
<i>Boodleopsis pusilla</i> (Collins) W.R.Taylor, A.B.Joly & Bernatowicz	<i>Padina sanctae-crucis</i> Børgesen
<i>Bryopsis pennata</i> J.V.Lamouroux	<i>Sargassum vulgare</i> var. <i>nanum</i> E.de Paula
<i>Bryopsis plumosa</i> (Hudson) C.Agardh	<i>Sphacelaria rigidula</i> Kützinger
<i>Caulerpa ambigua</i> Okamura	<i>Sphacelaria tribuloides</i> Meneghini
<i>Caulerpa fastigiata</i> Montagne	RHODOPHYTA
<i>Caulerpa racemosa</i> (Forsskål) J.Agardh	<i>Acrochaetium microscopicum</i> (Nägeli ex Kützinger) Nägeli
<i>Caulerpa verticillata</i> J.Agardh	<i>Aglaothamnion uruguayense</i> (Taylor) Aponte, Ballantine & Norris
<i>Caulerpa webbiana</i> Montagne	<i>Amphiroa fragilissima</i> (Linnaeus) J.V.Lamouroux
<i>Chaetomorpha aerea</i> (Dillwyn) Kützinger	<i>Botryocladia pyriformis</i> (Børgesen) Kylin
<i>Chaetomorpha antennina</i> (Bory) Kützinger	<i>Centroceras clavulatum</i> (C.Agardh) Montagne
<i>Chaetomorpha</i> sp.	<i>Ceramium brasiliense</i> A.B.Joly
<i>Cladophoropsis membranacea</i> (Hofman Bang ex C.Agardh) Børgesen	<i>Ceramium dawsonii</i> A.B.Joly
<i>Dasycladus vermicularis</i> (Scopoli) Krasser	<i>Ceratodictyon variabile</i> (J.Agardh) R.E.Norris
<i>Dictyosphaeria cavernosa</i> (Forsskål) Børgesen	<i>Chondria polyrhiza</i> Collins & Hervey
<i>Dictyosphaeria ocellata</i> (M.Howe) Olsen-Stojkovich	<i>Digenea simplex</i> (Wulfen) C.Agardh
<i>Dictyosphaeria versluisii</i> Weber-van Bosse	<i>Erythrotrichia carnea</i> (Dillwyn) J.Agardh
<i>Halimeda discoidea</i> Decaisne	<i>Gayliella flaccida</i> (Harvey ex Kützinger) T.O.Cho & L.J.McIvor
<i>Halimeda tuna</i> (J.Ellis & Solander) J.V.Lamouroux	<i>Gelidium pusillum</i> (Stackhouse) Le Jolis
<i>Neomeris annulata</i> Dickie	<i>Gracilaria cornea</i> J.Agardh
<i>Penicillus capitatus</i> Lamarck	<i>Gymnothamnion elegans</i> (Schousboe ex C.Agardh) J.Agardh
<i>Phyllocladon anastomosans</i> (Harvey) Kraft & M.J.Wynne	<i>Herposiphonia secunda</i> (C.Agardh) Ambronn
<i>Udotea flabellum</i> (J.Ellis & Solander) M.Howe	<i>Herposiphonia tenella</i> (C.Agardh) Ambronn
<i>Ulva lactuca</i> Linnaeus	<i>Heterosiphonia crispella</i> (C.Agardh) M.J.Wynne
<i>Ulvella lens</i> P.Crouan & H.Crouan	<i>Hypnea spinella</i> (C.Agardh) Kützinger
<i>Valonia utricularis</i> (Roth) C.Agardh	<i>Jania adhaerens</i> J.V.Lamouroux
<i>Willeella brachyclados</i> (Montagne) = <i>Cladophora montagneana</i>	<i>Jania cubensis</i> Montagne ex Kützinger
PHAEOPHYCEAE	<i>Jania rubens</i> (Linnaeus) J.V.Lamouroux
<i>Asteronema breviararticulatum</i> (J.Agardh) Ouriques & Bouzon	<i>Leptofaucheia rhodymenioides</i> W.R.Taylor
<i>Bachelotia antillarum</i> (Grunow) Gerloff	<i>Melanothamnus ferulaceus</i> (Suhr ex J.Agardh) Díaz-Tapia & Maggs
<i>Chnoospora minima</i> (Hering) Papenfuss	<i>Melanothamnus harveyi</i> (Bailey) Díaz-Tapia & Maggs
<i>Colpomenia sinuosa</i> (Mertens ex Roth) Derbès & Solier in Castagne	<i>Ophidocladus simpliciusculus</i> (P.Crouan & H.Crouan) Falkenberg
<i>Canistrocarpus cervicornis</i> (Kützinger) De Paula & De Clerck	<i>Palisada flagellifera</i> (J.Agardh) K.W.Nam
<i>Dictyopteris delicatula</i> J.V.Lamouroux	<i>Parviphycus trinitatis</i> (W.R.Taylor) M.J.Wynne
<i>Dictyopteris plagiogramma</i> (Montagne) Vickers	<i>Polysiphonia howei</i> Hollenberg
<i>Dictyota bartayresiana</i> J.V.Lamouroux	<i>Polysiphonia subtilissima</i> Montagne
<i>Dictyota menstrualis</i> (Hoyt) Schmitter, Hörning & Weber-Peukert	<i>Sahlingia subintegra</i> Cocks ex Bornet
<i>Dictyota mertensii</i> (C.Martius) Kützinger	<i>Taenioma nanum</i> (Kützinger) Papenfuss
<i>Feldmannia irregularis</i> (Kützinger) Hamel	<i>Tricleocarpa fragilis</i> (Linnaeus) Huisman & R.A.Townsend

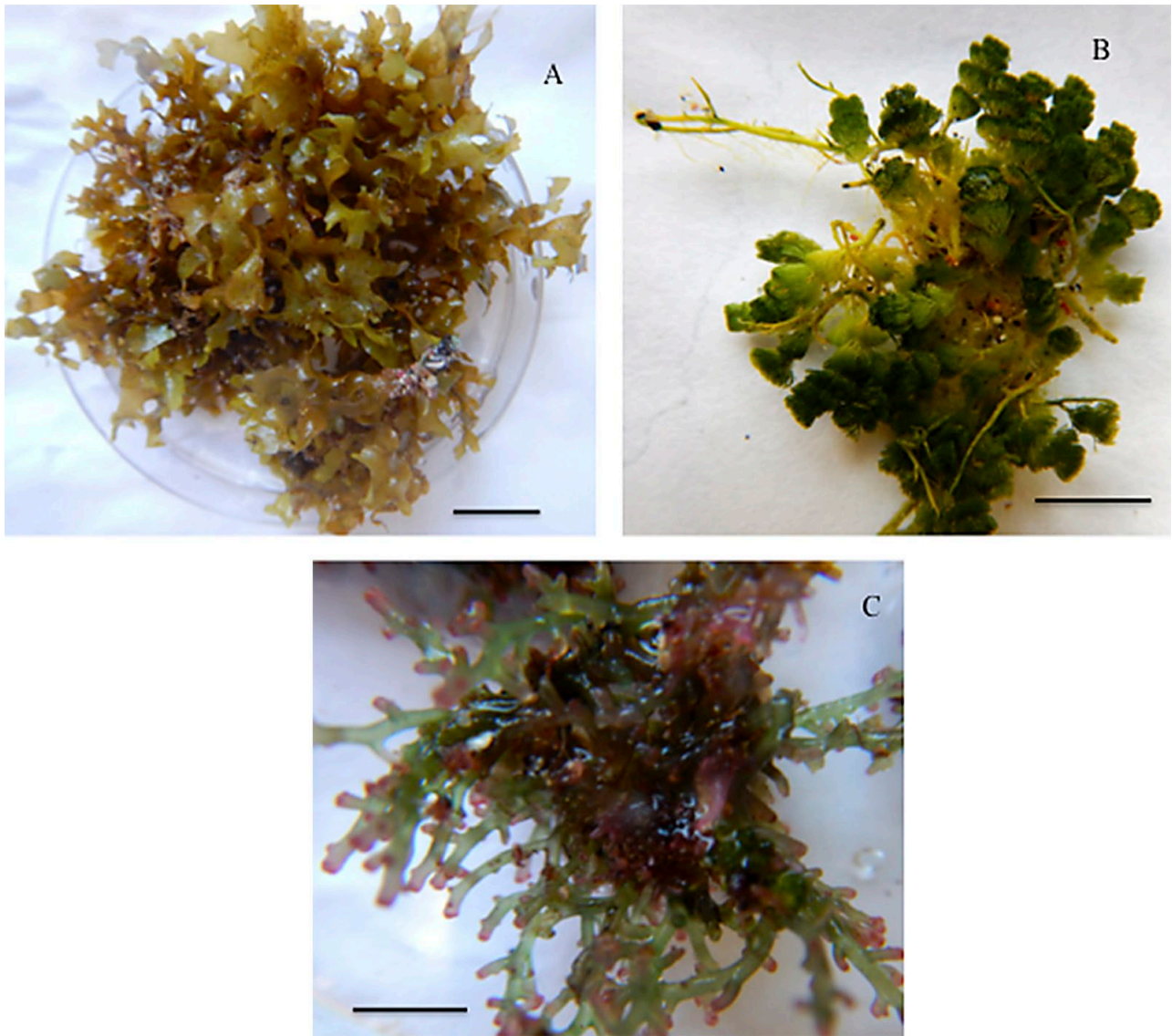


Fig. S1. – Larger and conspicuous seaweeds that grow on top of the turf and rhodolith beds along the midlittoral and shallow sublittoral (A, Dictyotales; B, *Caulerpa verticillata*; C, Tribe Laurencieae). Scale = 1 cm.