

*Mediterranean demersal resources and ecosystems:
25 years of MEDITS trawl surveys*
M.T. Spedicato, G. Tserpes, B. Mérigot and
E. Massutí (eds)

SCIENTIA MARINA 83S1
December 2019, S1-S3, Barcelona (Spain)
ISSN-L: 0214-8358

Spatio-temporal patterns of macrourid fish species in the northern Mediterranean Sea

Cristina García-Ruiz, Manuel Hidalgo, Paolo Carpentieri, Ulla Fernandez-Arcaya,
Palma Gaudio, María González, Angelique Jadaud, Antonello Mulas, Panagiota Peristeraki,
José Luis Rueda, Sergio Vitale, Gianfranco D'Onghia

Supplementary material

Table S1. – DFA results for each species analysed from the Mediterranean basin. For each model, the model number, error matrix structure (R), number of common trends (m) and corrected Aikake information criterion (AICc) are recorded.

<i>Coelorhynchus caelorhincus</i>				<i>Hymenocephalus italicus</i>			
Model	R	m	AICc	Model	R	m	AICc
1	diagonal and equal	1	762.10	8	equalvarcov	2	745.90
7	equalvarcov	1	763.91	7	equalvarcov	1	747.60
2	diagonal and equal	2	770.82	1	diagonal and equal	1	748.45
8	equalvarcov	2	771.61	2	diagonal and equal	2	750.69
4	diagonal and unequal	1	791.12	4	diagonal and unequal	1	764.95
5	diagonal and unequal	2	792.35	3	diagonal and equal	3	767.15
3	diagonal and equal	3	796.06	5	diagonal and unequal	2	768.20
9	equalvarcov	3	801.09	9	equalvarcov	3	768.47
6	diagonal and unequal	3	812.88	6	diagonal and unequal	3	788.76
<i>Nezumia aequalis</i>				<i>Nezumia sclerorhynchus</i>			
Model	R	m	AICc	Model	R	m	AICc
2	diagonal and equal	2	331.19	1	diagonal and equal	1	504.75
3	diagonal and equal	3	332.75	7	equalvarcov	1	505.26
1	diagonal and equal	1	333.22	2	diagonal and equal	2	507.54
8	equalvarcov	2	334.95	8	equalvarcov	2	509.49
9	equalvarcov	3	335.40	4	diagonal and unequal	1	512.02
7	equalvarcov	1	339.18	5	diagonal and unequal	2	515.39
5	diagonal and unequal	2	339.25	3	diagonal and equal	3	522.51
4	diagonal and unequal	1	343.03	9	equalvarcov	3	525.29
6	diagonal and unequal	3	344.21	6	diagonal and unequal	3	530.62
<i>Trachyrhynchus scabrus</i>							
Model	R	m	AICc				
5	diagonal and unequal	2	493.78				
8	equalvarcov	2	500.32				
6	diagonal and unequal	3	504.71				
7	equalvarcov	1	505.88				
4	diagonal and unequal	1	507.44				
2	diagonal and equal	2	510.24				
3	diagonal and equal	3	513.53				
1	diagonal and equal	1	515.42				
9	equalvarcov	3	519.25				

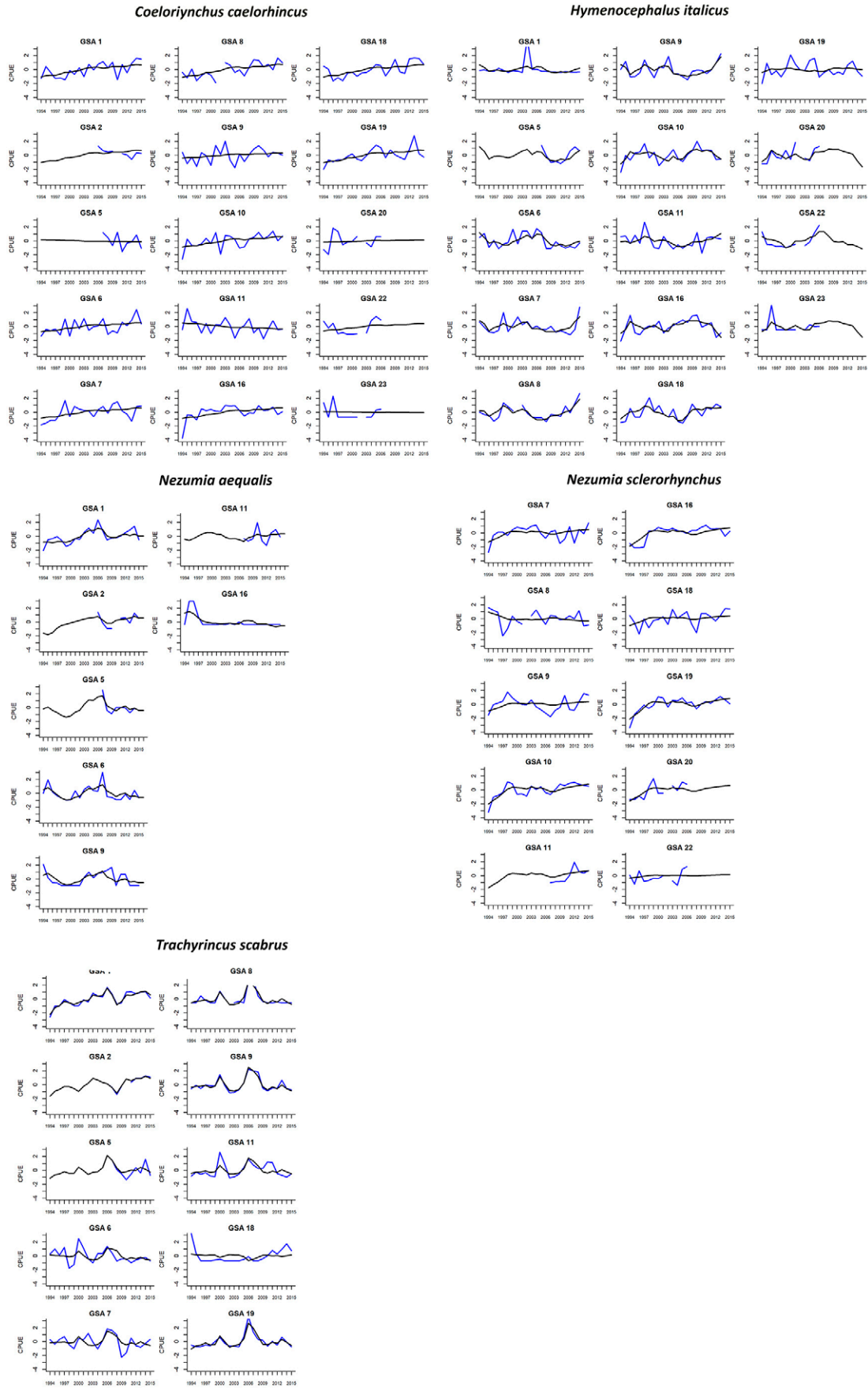


Fig. S1. – Model fits (black lines) to the best models obtained by DFA on standardized abundance time series for the five Macrouridae species. Data are logarithmically transformed ($\log[x+1]$).